

Building capacity in MLTC research



Introducing the new
Multiple Long-Term Conditions (MLTC)
Cross-NIHR Collaboration (CNC)



Professor Avan Aihie Sayer
Newcastle University

Professor Kamlesh Khunti
University of Leicester



UK MLTC Symposium
18 April 2024

What is the NIHR?

National Institute for Health and Care Research

We fund, enable and deliver world-leading health and social care research that improves people's health and wellbeing, and promotes economic growth.

- NIHR is the nation's largest funder of health and care research
- Its mission is to improve the health and wealth of the nation through research
- This is outlined in Best Research for Best Health: the Next Chapter 2021
- It funds people, projects, technology together with sustained investment in research infrastructure



NIHR Strategic Framework for Multiple Long-Term Conditions (Multimorbidity) MLTC-M Research



Published: 14 April 2020

Version: April 2020 - Version 1.0

 [Print this document](#)

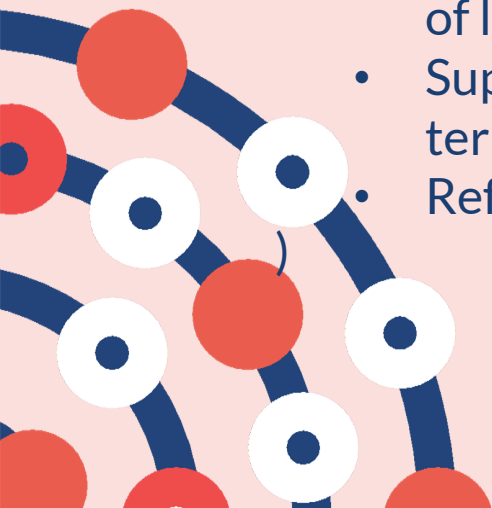
Aims of NIHR Strategic Framework for Multiple Long-term Conditions Research



The NIHR will fund high quality research to provide an evidence base that:

- Identifies and maps common clusters of disease and their trajectories among the population
- Identifies the problems and outcomes that matter most to patients and carers and how they would like to see services configured to meet their needs
- Delivers research that enables the health and social care system to take a patient-centred, whole person approach to the treatment and care for people with MLTC-M, including quality of life and well-being
- Supports design and delivery of interventions to prevent patients progressing from one long-term condition to MLTC-M
- Refresh 2024

<https://www.nihr.ac.uk/documents/nihr-strategic-framework-for-multiple-long-term-conditions-multimorbidity-mltc-m-research/24639>



Multiple Long-Term Conditions (MLTC) Cross- NIHR Collaboration (CNC) 2022 - 2027

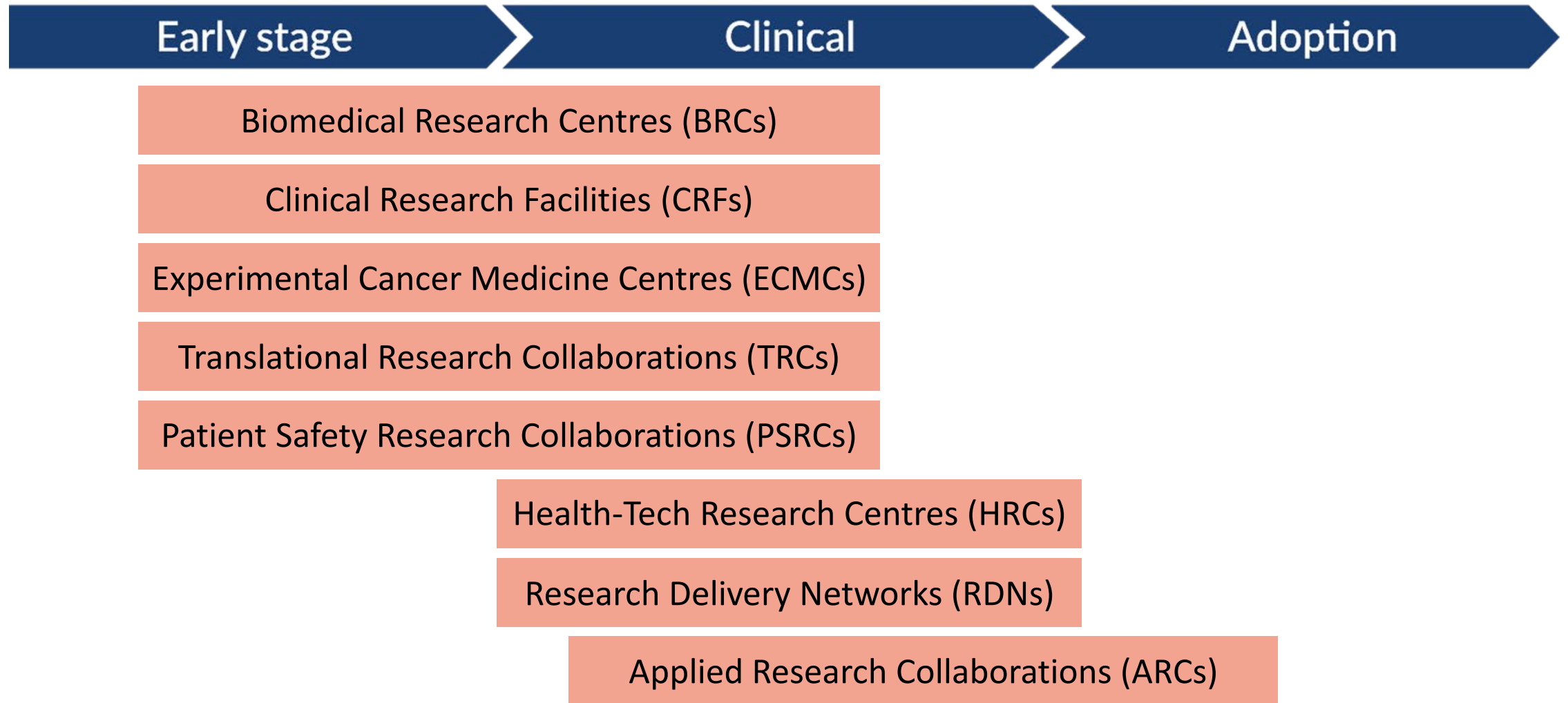


- Brings together NIHR translational, applied and policy research infrastructure to respond to the NIHR Strategic Framework for MLTC Research
- Proof of concept that the infrastructure can effectively work together in this way
- Will address important and novel MLTC research questions that could not be answered without this major collaborative endeavour
- Three main workstreams: interventions and prevention, methodologies, models of care

Co-Chairs Avan Aihie Sayer Director NIHR Newcastle BRC and Kamlesh Khunti
Director NIHR ARC East Midlands

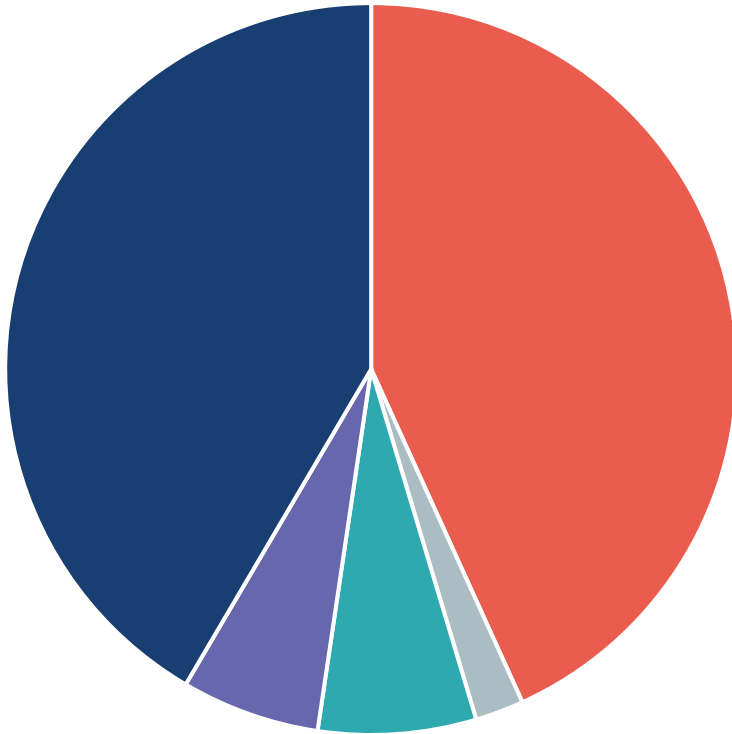


NIHR Research Infrastructure - evolving organisation and nomenclature



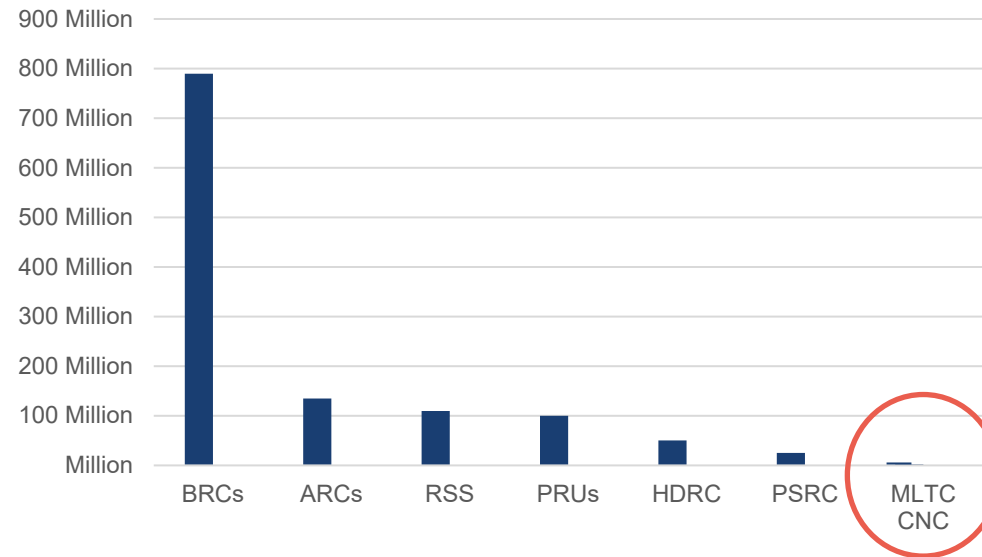
MLTC CNC 5 Year Funding 2022 - 2027 £1.95M

MLTC CNC Cost Allocation



■ Staff Costs ■ General running costs & consumables ■ PPIE Costs ■ Dissemination Costs ■ Pump Priming Funding

NIHR Infrastructure Funding



Identifying research gaps and priorities in multiple long-term conditions



Multimorbidity: a priority for global health research
April 2018
The Academy of Medical Sciences

Cross-funder multimorbidity research framework
Version 1.0, November 2019
The Academy of Medical Sciences, NIHR, Wellcome

The Multiple Conditions Guidebook
CASE STUDIES AND PRACTICAL SOLUTIONS TO HELP LOCAL AREAS IMPROVE HEALTH AND WELLBEING
Taskforce on Multiple Conditions November 2019
The Richmond Group of Charities, COPPE, ST THOMAS CHARITY, Royal College of General Practitioners

The Richmond Group of Charities
Multimorbidity
Understanding the challenge
A report for the Richmond Group of Charities Hardeep Aiden January 2018

James Lind Alliance
Priority Setting Partnerships



Multiple Conditions in Later Life
Priority Setting Partnership

- Home
- About the JLA
- The PSPs
- Top 10s
- JLA Guidebook
- News and Publications
- Making a difference

You are in: [Home](#) » [The PSPs](#) » [Safe Care for Adults with Complex Health Needs](#) » [Top 10 Priorities](#)

Safe Care for Adults with Complex Health Needs Top 10



Multiple long-term conditions (multimorbidity): making sense of the evidence

PUBLIC HEALTH | 30.03.21 | doi: [10.3310/collection_45881](https://doi.org/10.3310/collection_45881)



Multiple long-term conditions (multimorbidity) and inequality- addressing the challenge: insights from research

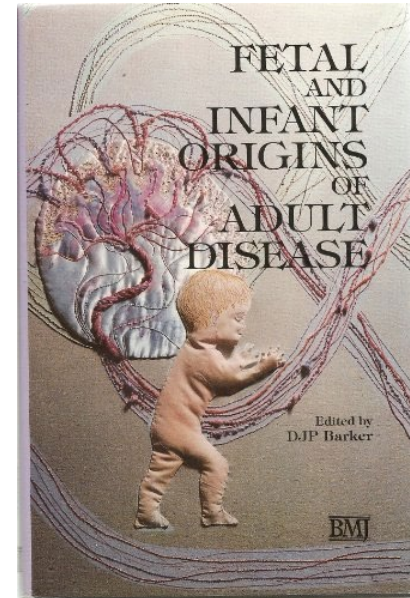
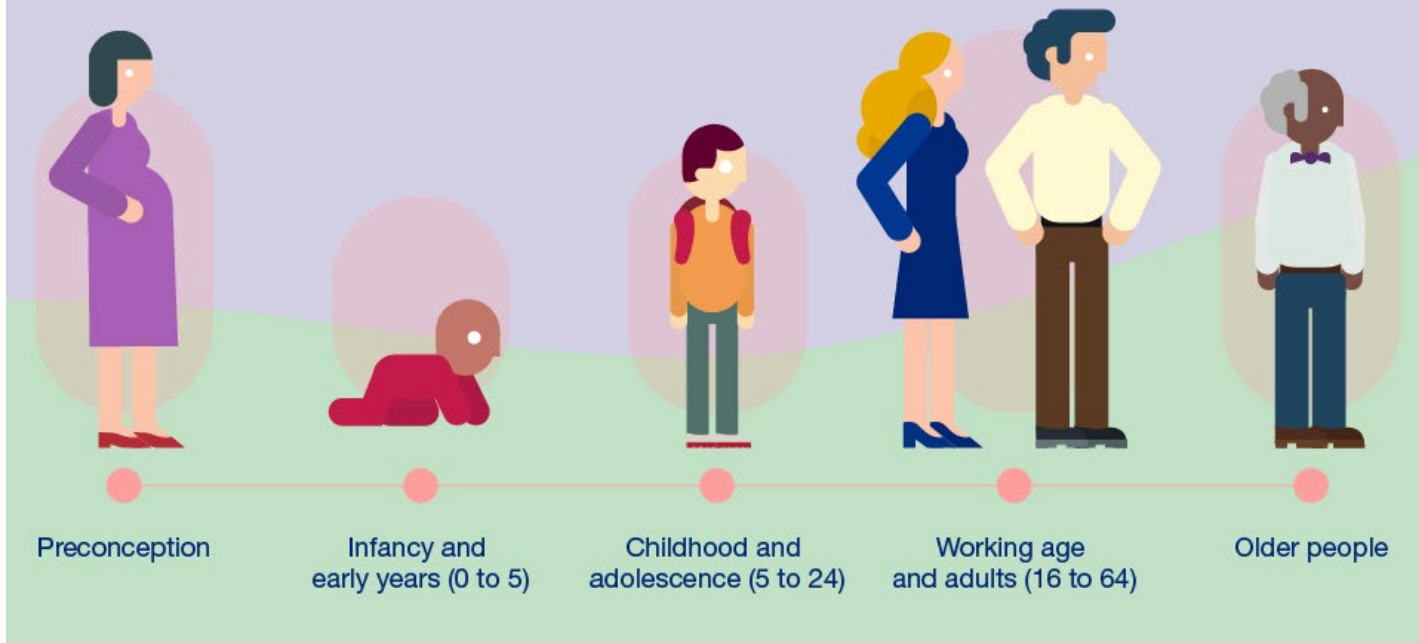
HEALTH AND SOCIAL CARE SERVICES RESEARCH | 20.09.23

| doi: [10.3310/nihrevidence_59977](https://doi.org/10.3310/nihrevidence_59977)

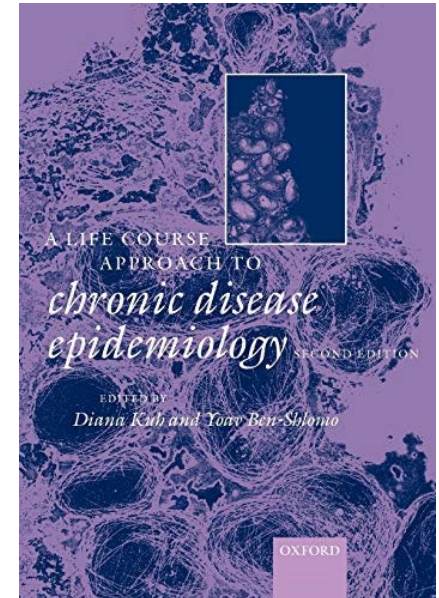
Taking a life course approach to multiple long-term conditions

The life course approach

Life stages



Age and Ageing 1998; 27: 579–583



© 1998, British Geriatrics Society

Are rates of ageing determined *in utero*?

AVAN AIHIE SAYER, CYRUS COOPER, JENNIFER R. EVANS¹, ABDUL RAUF¹, RICHARD P. L. WORMALD¹, CLIVE OSMOND, DAVID J. P. BARKER

MRC Environmental Epidemiology Unit, University of Southampton, Southampton General Hospital, Southampton SO16 6YD, UK

¹Glaxo Department of Ophthalmic Epidemiology, Institute of Ophthalmology, Moorfields Eye Hospital, London EC1V 2PD, UK

Address correspondence to A. Aihie Sayer. Fax (+44) 1703 704021. E-mail: aas@mrc.soton.ac.uk

MLTC CNC External Launch Event

Wednesday 27 November 2024
Royal College of General Practitioners

Join us for an event which will bring together MLTC experts from across the UK, showcase CNC work so far and highlight future opportunities.

Programme and registration to follow



CNC Overview

NIHR Multimorbidity Oversight Group

NIHR MLTC CNC Steering Group



MLTC CNC: Operational Management Group



Professor Avan Aihie Sayer, CNC Co-Chair, Newcastle



Professor Kamlesh Khunti, CNC Co-Chair, Leicester



Kate Holmes, Head of Collaborations, NIHR



Jessica Goddard, Senior Research Manager, NIHR



Martin Dixon, BRC COO, Newcastle



Laura Morgan, CNC Collaborations Manager, Newcastle



Donna Richardson, Assistant Director, NIHR ARC East Midlands, Leicester



James Finney, CNC Partnerships Manager, Leicester

Interventions and Prevention Workstream - Membership

Co-Leads

- Professor Sally Singh – Leicester (Physiotherapist)
- Professor Miles Witham – Newcastle (Geriatrician)



Members

- Professor Guru Aithal – Nottingham (Hepatologist)
 - A/Professor Michelle Collinson – Leeds (Statistician)
 - Professor Rachel Cooper – Newcastle (Epidemiologist)
 - Professor Melanie Davies – Leicester (Physician)
 - Professor Andrew Farmer – Oxford (GP)
 - Professor Simon Fraser - Southampton (GP)
 - Dr Peter Hanlon – Glasgow (GP)
 - Professor Sallie Lamb - Exeter (Allied Health Professional)
 - Dr Claire McDonald – Newcastle (Geriatrician)
 - Professor Krish Nirantharakumar – Birmingham (Public Health)
 - Dr James Sheppard – Oxford (Data Scientist)
 - Professor Stephanie Taylor – QMUL (Public Health)
 - Professor Lily Yao – Southampton (Health Economist)
- Laura Morgan – Newcastle (Manager)



Interventions and Prevention Workstream - Aims

- To identify and prioritise key challenges and interventions which require a collaborative approach
- To identify appropriate funding opportunities that will enable the delivery of these priority research activities
- To develop and deliver multi-site translational research networks, collaboratives and projects which cannot be performed by one centre



Lifecourse approach

Interdisciplinary research

Spanning the translational circle

Methodologies Workstream - Membership

Co-Leads

- Professor Colin McCowan – St Andrews (Data Scientist)
- A/Professor Hajira Dambha-Miller – Southampton (GP)



Members

- Dr Alex Dregan – KCL (Public Health Professional)
 - Professor Amanda Farrin – Leeds (Statistician)
 - Dr Ge Yu - KCL (Health Economist)
 - Dr Jana Suklan – Newcastle (Methodologist)
 - Professor Rafael Perera – Oxford (Statistician)
 - Professor Reecha Sofat - Liverpool (Pharmacologist)
 - Professor Rhiannon Owen – Swansea (Statistician)
 - Dr Salwa Zghebi – Manchester (Researcher)
 - Dr Sarah Hughes - Birmingham (Allied Health Professional)
 - Dr Victoria Louise Keevil - Cambridge (Geriatrician)
-
- James Finney – Leicester (Manager)



Methodologies Workstream - Aims

1. Identify gaps in methodological understanding of MLTC research, collate and disseminate expert knowledge
2. Encourage transparency, standardisation and reproducibility of MLTC research through quality standards and to expedite research that offers greater value for money
3. Build methodological capacity in MLTC research
4. Work with patient and public partners to ensure the research is driven by the population it intends to serve

Models of Care Workstream - Membership

Co-Leads

- Professor Andrew Clegg - Leeds (Geriatrician)
- A/Professor Rachel Johnson - Bristol (GP)



Members

- Professor Kam Bhui - Oxford (Physician)
- Professor Pete Bower - Manchester (Health Services Researcher)
- Dr Jo Butterworth - Exeter (Physician)
- Dr Felicity Dewhurst - Newcastle (Physician)
- Professor Vicki Godwin - Exeter (Allied Health Professional)
- Dr Kate Lippiett - Southampton (Nurse)
- Professor Ian Maidment - Aston (Pharmacist)
- Professor Tom Marshall - Birmingham (Physician)
- A/Professor Rubén Mújica-Mota - Leeds (Health Economist)
- Dr Barbara Nicholl - Glasgow (Epidemiologist)
- A/Professor Samuel Relton - Leeds (Statistician)
- Professor Susan Shenkin - Edinburgh (Physician)
- Dr Krystal Warmoth - Hertfordshire (Social and Health Psychologist)
- Laura Morgan - Newcastle (Manager)



Models of Care Workstream – Definition and Aims

The Workstream's definition of Models of Care

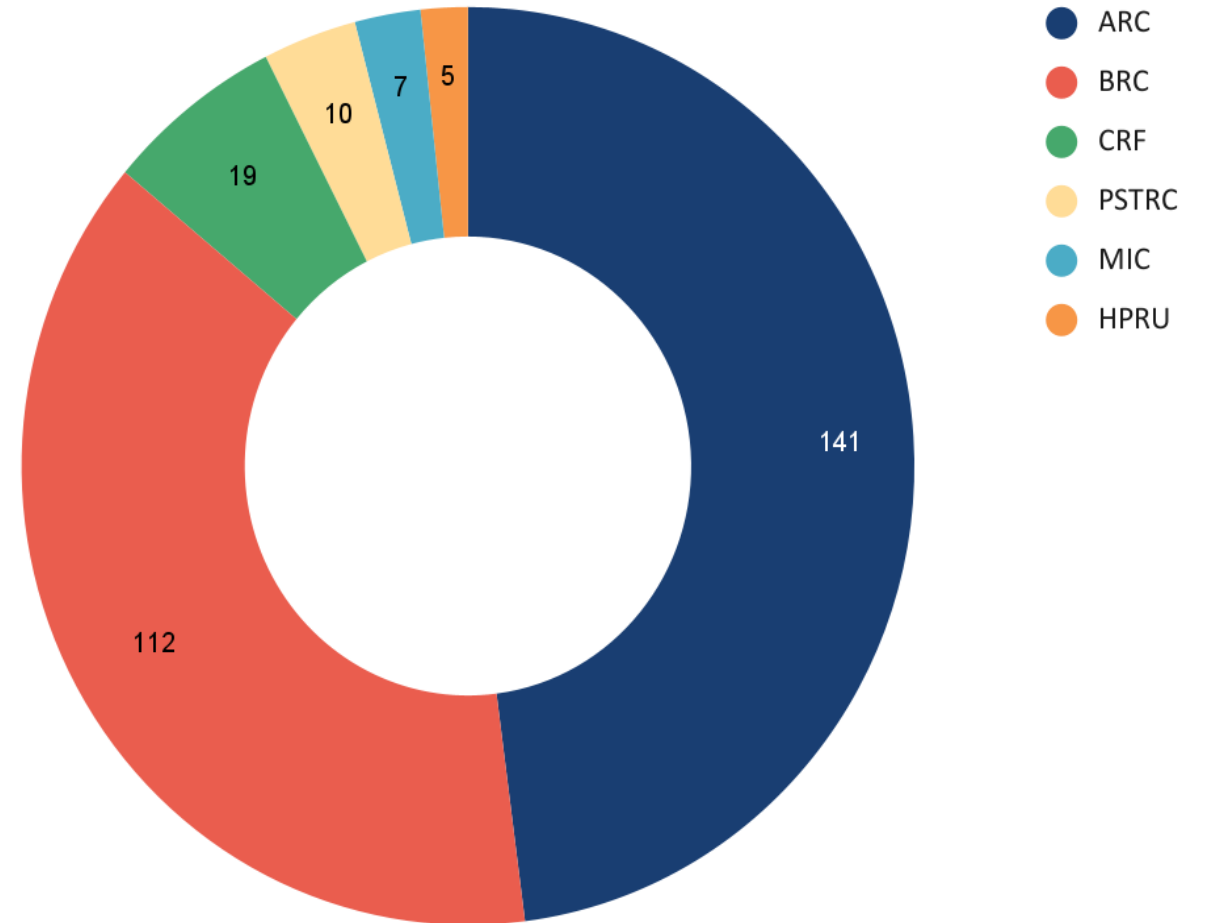
A way of delivering health and care services that ensures the best possible outcomes for individuals and groups of people living with MLTC. It defines the principles, values, roles, and practices that guide how care and support are provided throughout the stages of MLTC.

Workstream Aims

- To conduct a mapping exercise to identify current NIHR-funded research relating to models of care, to support identification of key research priorities.
- To use the mapping exercise results and work with the Models of Care Workstream members, other parts of NIHR, and external stakeholders to agree key tractable research challenges.
- To develop and prioritise research activities to address these challenges.
- To work with external funders, including commercial organisations, specialist societies and charities, to identify appropriate funding opportunities that will enable the delivery of these priority research activities.
- To support the alignment of research activities across NIHR to maximise on existing or leveraged investments and add value to complementary initiatives.
- To develop and help deliver multi-site research projects/ activities which cannot be performed by one centre.

NIHR MLTC Portfolio Analysis: Infrastructure Snapshot 2021 – 2022

- During the 2021/22 FY, 55 NIHR infrastructure centres supported **294** MLTC studies
- Proportion of MLTC studies supported by ARCs 48%, BRCs 38%, CRFs 6.5%



NIHR MLTC CNC Next Steps

- Establish workstream funding – internal and external
- Recruit workstream public contributors – to be advertised soon
- **Engage with MLTC research community across NIHR infrastructure and wider**
- Engage with other MLTC stakeholders including NHS England, charities, industry
- External launch event Wednesday 27 November 2024 London – please save the date!